



Häv®o

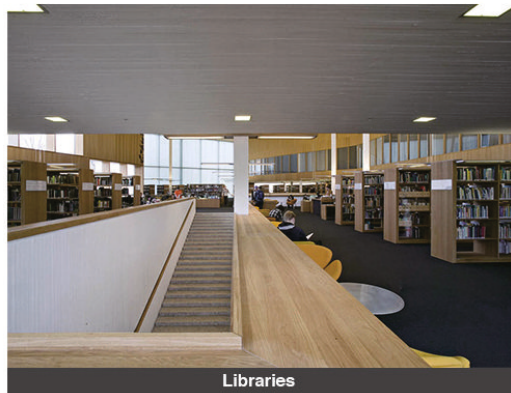
LED Panel Light Series

Application

Hä v®o



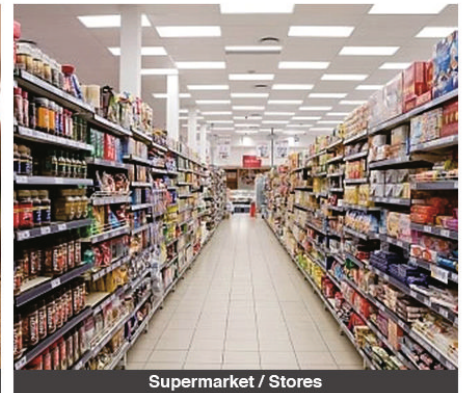
School / Kinder Garden



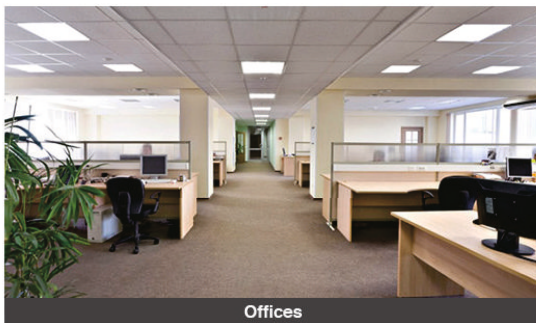
Libraries



Meeting Rooms



Supermarket / Stores



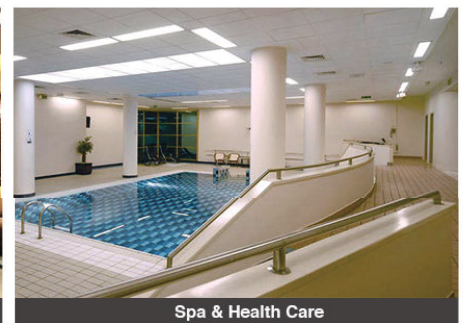
Offices



Sport Areas



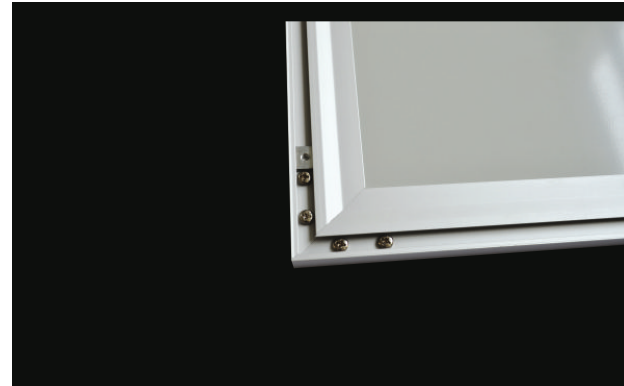
Building Hall



Spa & Health Care

Product images

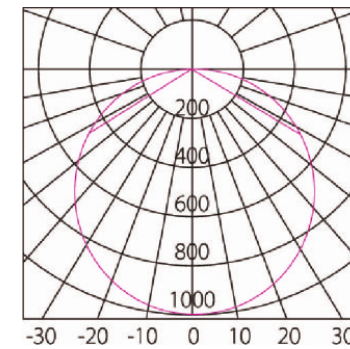
Häv®o



Specifications

Häv®o

- 🌿 High efficiency & lower power consumption
- 🌿 Delivers high brightness & excellent illumination even in high ceiling areas
- 🌿 Extraordinary long life of LED's (over 50,000 hrs) & external isolated constant current power supply (over 30,000 hrs) to ensure zero maintenance.
- 🌿 No UV or IR radiations
- 🌿 Environment friendly as it does not contain Mercury
- 🌿 Instant light with low running temperatures
- 🌿 Excellent CRI
- 🌿 Dimming options:
 - 🌿 DALI Dimmable
 - 🌿 1 – 10 V Dimmable
 - 🌿 Colour Temperature & Brightness adjustable



Model	3030-12A	300600-24A	600600-40A	600600-40B	620620-40A	620620-48A	3001200-40A	6001200-70A
Dimension	295x295x10mm	295x595x10mm	595x595x10mm	595x595x10mm	620x620x10mm	620x620x10mm	295x1195mm	595x1195mm
Power	12W	24W	40W	40W	40W	48W	40W	70W
Luminous Flux	900Lm	1800Lm	3200Lm	3200Lm	3200Lm	3850Lm	3200Lm	5250Lm
Light colour C.C.T	3000-6500K	3000-6500K	3000-6500K	3000-6500K	3000-6500K	3000-6500K	3000-6500K	3000-6500K
Input Voltage	AC200-240V	AC200-240V	AC200-240V	AC200-240V	AC200-240V	AC200-240V	AC200-240V	AC200-240V
CRI	>80	>80	>80	>80	>80	>80	>80	>80
PF	>0.95	>0.95	>0.95	>0.95	>0.95	>0.95	>0.95	>0.95
IP Rating	40	40	40	40	40	40	40	40
Beam Angle	120	120	120	120	120	120	120	120
light Emihing	1 sides	2 sides	2 sides	2 sides	2 sides	2 sides	1 sides	2 sides
Led Type	SMD3014	SMD3014	SMD3014	SMD3014	SMD3014	SMD3014 280 pcs	SMD3014	SMD3014

Installation

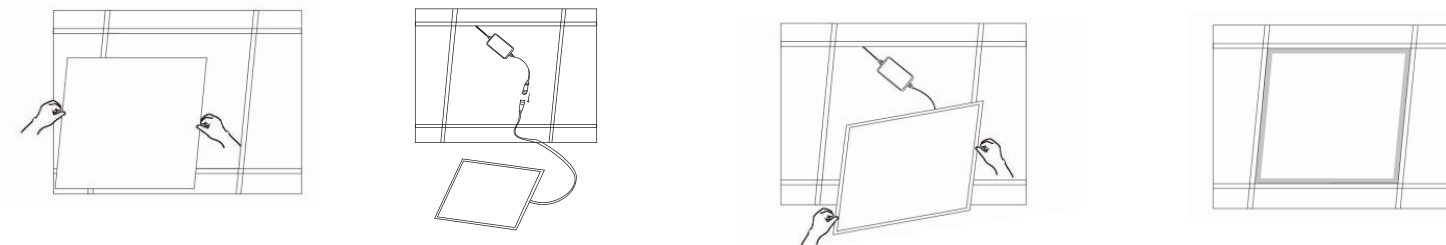
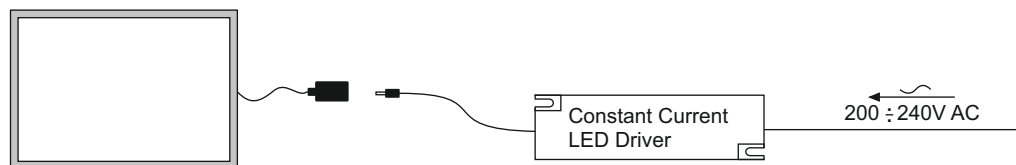
1 Recessed Luminaire

1.Remove the ceiling gypsum board .

2.Connect the power cord .

3.Put through the panel light along ceiling's diagonal.

4.Fix the panel light to suitable place and power on.



2 Z bracket

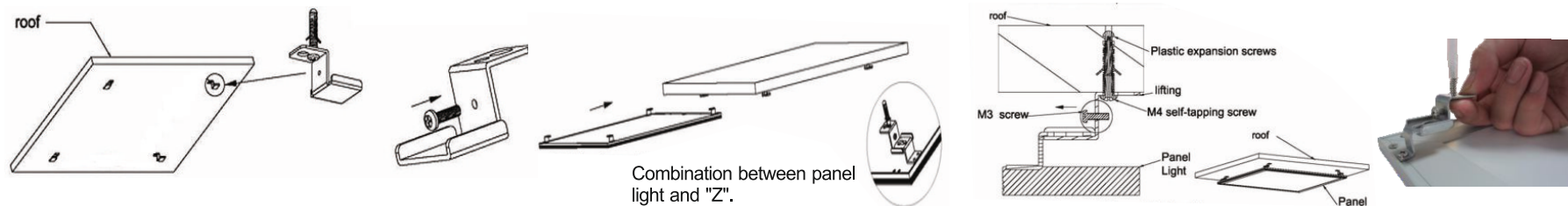
1. Fix these four "Z" on the roof.

2.Nailing M3 screws into "Z" in the direction as show

3.Put panel light on the "Z" as show

4. Loosen M3 screws as show

5. Installation finished.

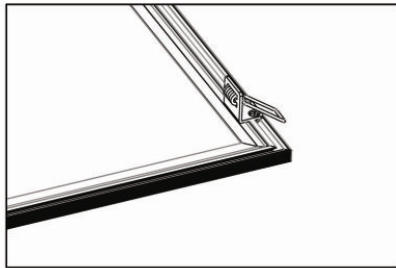


Installation

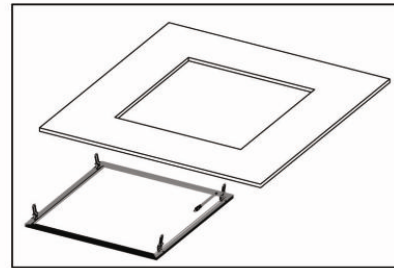
Häv®o

3 Spring fastener installation

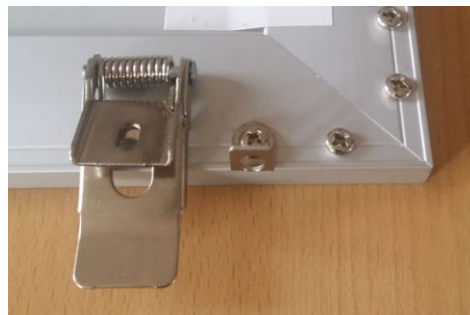
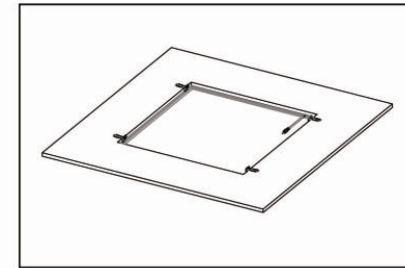
1. Fix four spring fasteners by screws to the panel light.



2. Pull up the spring fasteners in vertical, then Snap into the cut hole.



3. Complete the installation



Installation

Häv®o

4 Ceiling mounting frame installation

1. Connect the three frames like a drawer with plastic corner connectors at both ends, and fix onto the roof.

2. Slot the panel light into the drawer frames ensuring it sits securely.

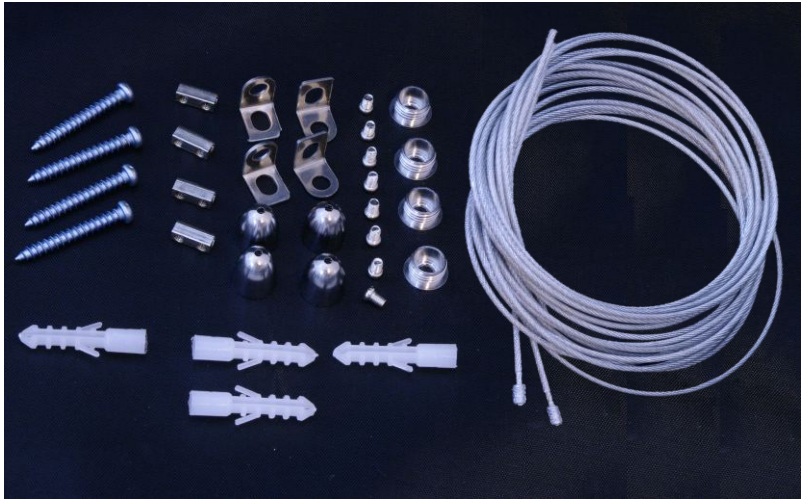
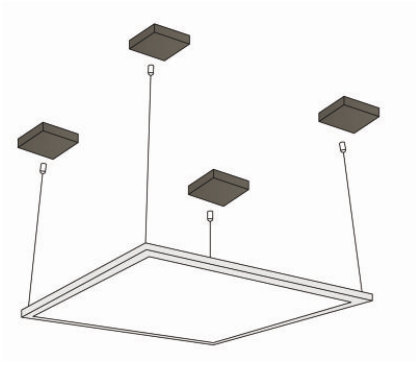
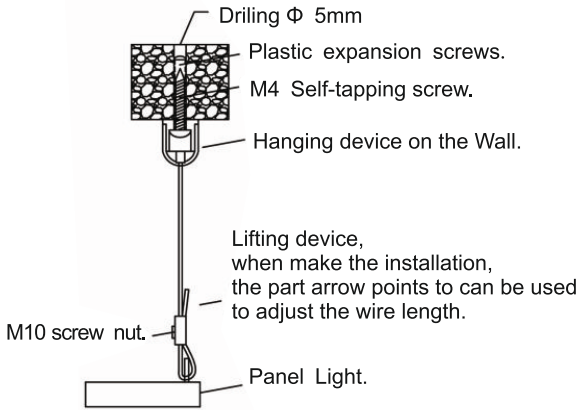
3. Lock the last frame in place by screws.

4. Complete the installation.



Installation

5 Lifting type installation



Package

Häv®o

EPE Package



Innerbox Package



Package Way	Model	300*300	300*600	600*600	620*620	300*1200	600*1200
EPE Package	QTY/CTN	8	4	4	4	4	4
	Dimmension(mm)	725*185*375	670*185*375	670*185*675	690*185*695	1265*185*375	1280*120*650
	G.W(kg)	7.8	10.12	12.54	16.2	12.24	30.44
Innerbox Package	QTY/CTN	8	4	4	4	4	4
	Dimmension(mm)	735*400*220	680*405*220	685*200*705	695*200*725	1280*405*220	1325*200*670
	G.W(kg)	9.46	10.96	14.9	17.8	14.56	30.84